

LIFEBREATH[®]
HEAT RECOVERY VENTILATORS (HRVs)



Breathe easy

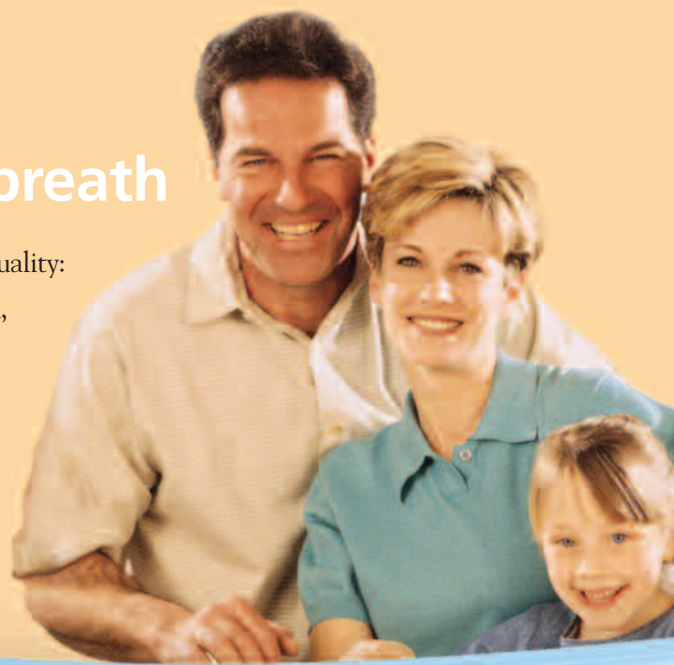
Lifebreath
saves energy
costs and lets
your family
breathe easy.



Your loved ones deserve Lifebreath

Your family may be suffering from poor indoor air quality:

- We spend about 90% of our time indoors at work, school and home.
- Indoor air can be 5 times more polluted than outdoor air.
- Introducing fresh air is by far the most effective way to improve indoor air quality.



Breathe easy

Your house could be a health hazard without you knowing it!

We can't live without air. Lots of it – clean, fresh air, full of life-giving oxygen. Yet homes today are built tight to save energy and keep fresh air out. Even older homes that have been upgraded with weather stripping, caulking, new windows and increased insulation can be a sealed environment for recirculating stale air.

The result:

Indoor air quality deteriorates as energy efficiency rises.

The solution:

A Lifebreath Heat Recovery Ventilator (HRV). It exhausts stale air and harmful contaminants and fills your home with fresh, clean air. What's more, it actually helps save energy. Read on for full details.



The indoor air is over-loaded with carbon dioxide. You feel drowsy and find it difficult to concentrate.



Health problems are aggravated by paint, adhesives, furnishings, plastics, cleaning compounds, carpets and underpadding fumes trapped inside your house.



Smells from cooking, pets and bathrooms never seem to go away.



Respiratory problems are aggravated by tobacco smoke, pollen, dust, pet dander, dust mites and combustion byproducts. These build up in winter – summer, too, if you have air-conditioning.



Young children are especially at risk because they can be particularly prone to asthma, allergies and other respiratory problems.



Colds seem to hang around forever.



Molds and fungi thrive in damp conditions and are commonly found in basements, kitchens, bathrooms or any other place moisture is found.



You suffer, and the house suffers too, from excessive humidity. In winter you'll see it as condensation on windows and frames. You won't see it at work inside walls, where it can eventually cause serious structural damage.

Lifebreath saves energy costs

LIFEBREATH[®]
HEAT RECOVERY VENTILATORS (HRVs)

and save energy

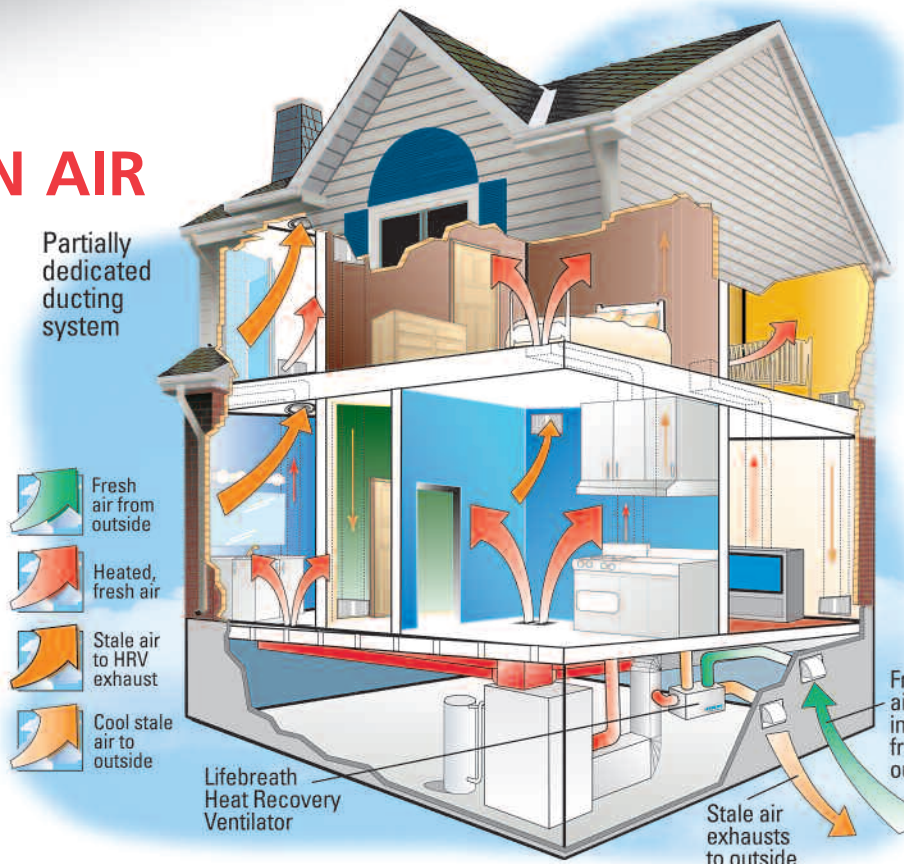
RELIABLE CLEAN AIR

Our compact, electrically-powered HRV moves stale, contaminated, warm air from inside the house to the outdoors. At the same time it draws fresh, oxygen-laden air from outside and distributes it throughout the house. Stale, polluted air is constantly being replaced by an equal quantity of fresh, clean air.

HOW THE HRV WORKS

As the two air streams pass through the HRV they do not mix. They pass on either side of an aluminum heat exchange core which transfers heat from the outgoing air to the incoming air. The efficiency of the Lifebreath HRV is so great that virtually none of the warmth collected from your house is lost to the outside.

In summer, the HRV works in reverse – removing heat from the incoming air and transferring it to the outgoing air, keeping your home cool and fresh.



- Tempered fresh air is distributed throughout the house.
- The Lifebreath HRV can eliminate the need for separate exhaust fans in kitchens and bathrooms which can often be noisy and inefficient.
- The Lifebreath HRV moves stale air out, replaces it with fresh air.

It lets your family breathe easy.

The perfect balance of clean, fresh air

What sets Lifebreath ventilation technologies ahead of the others is “balanced ventilation”. This means for every cubic foot of fresh air introduced into the home an equal amount of stale, contaminated air is exhausted out. Unlike other “simple” ventilation strategies the HRV is an engineered system designed to avoid depressurization of the home and the development of air infiltration from wall cavities which can lead to moisture damage, rot and harmful mold.

Installation flexibility

Lifebreath HRV's come in an array of models to adapt to the most challenging installations. Our top and side port configurations are ideally suited for any new and retrofit project. Consult your authorized Lifebreath dealer for details on our complete product line.

Most efficient HRV available!

Not only does the Lifebreath HRV save energy through the heat recovery core, it is also the most efficient HRV to run:

- Select models available with ECM.
- Less than 17 watts on low speed.



1 Fresh air from outside.

2 Fresh heated air to house.

3 Stale air from house.

4 Cool stale air to outside.

Automatic Defrost

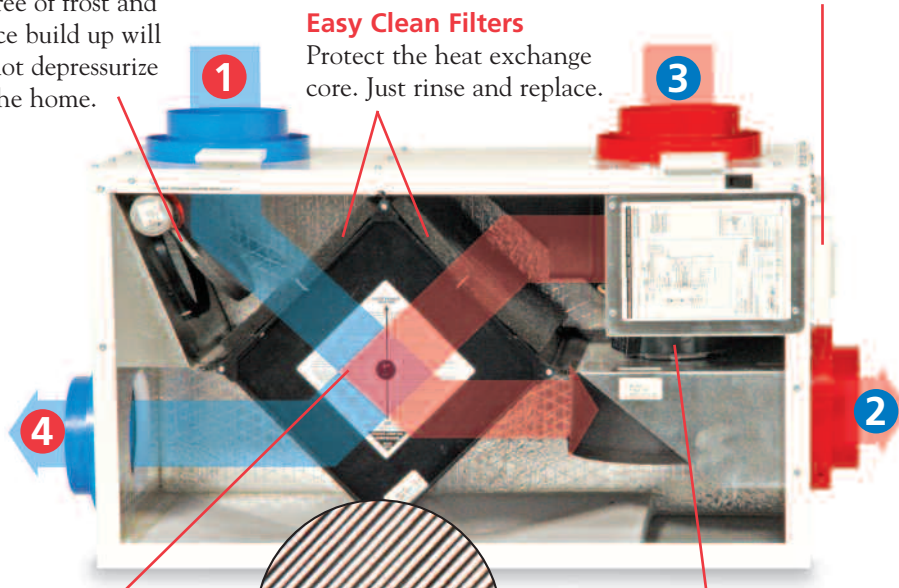
Recirculating damper defrost to keep unit free of frost and ice build up will not depressurize the home.

Easy Clean Filters

Protect the heat exchange core. Just rinse and replace.

Built-In Dehumidistat

Automatically increases air exchange rate when humidity rises (most models). No more weeping windows.

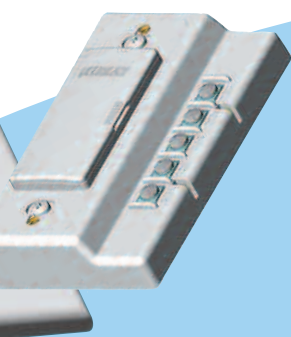


Aluminum Heat Exchange Core

Patented design, highly conductive aluminum transfers maximum amount of heat to incoming air. Nothing does a better job than aluminum - don't settle for plastic or paper.

Premium Ball Bearing Motor

Energy efficient and designed for maintenance-free life. Quiet and reliable.



Smart ControlAir-15: the industry leader!

Take Control of Your Indoor Environment

Lifebreath Smart ControlAir-15 is standard on all residential HRV's and is the best way to take control of your Indoor Air Quality.

The control panel comes mounted on the HRV, and can be simply removed and installed in a remote location for operating convenience.

Smart ControlAir-15 Features 4 Modes of Operation With 5 Speeds:

- Standby/On mode
- 20 On 40 Off mode
- 20 On/40 Off recirculation mode
- Recirculation mode
- Auto Dehumidistat

ControlAir-15
Digital Remote Control

How a Lifebreath Heat Recovery Ventilator (HRV) Saves on Energy Costs

and save energy

Save \$100s Annually

Over sixty percent of the average home energy bill comes from heating and cooling. So using an HRV to get fresh air into your home, versus opening a window, will go a long way towards saving you money. A recent study of new national programs such as Energy Star for homes found that an ultra efficient home may cost slightly more upfront but this upgrade translates into an investment not an expense.

The cost of upgrading a \$160,000 home to an ultra efficient standard represents about a 4 percent increase. However, this upgrade translates into an annual energy savings of \$818 a year. If a homeowner paid for the upgrades by increasing their mortgage payments this would generate \$423 a year in annual cash flow on energy savings. HRV's have long been an important part of bringing homes up to an ultra efficient standard.

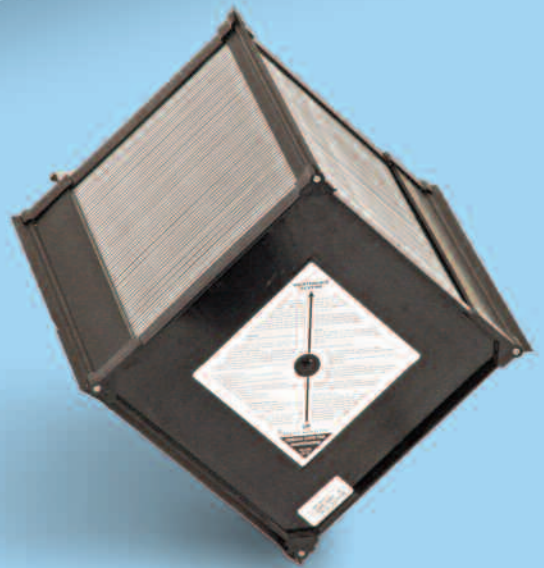
Core Competency

At the heart of the Lifebreath HRV is our Patented Aluminum Core. This exclusive design represents the best heat transfer efficiency money can buy. The durable, corrosion resistant and lightweight Lifebreath Aluminum Core delivers maximum savings year after year. Unlike other manufacturers who use plastic or paper cores, our Aluminum technology is rugged to endure the extremes of winter and summer operation. Also the Lifebreath heat exchange core can be washed in soap and water in just five minutes for a thorough clean.

The Lifebreath HRV is available with temperature recoveries up to 90% and the core includes a lifetime warranty.

Warranty Statement

Lifetime warranty on the aluminum heat exchange core; five year parts warranty from date of installation.



OVER
200,000
UNITS SOLD



Nutech: Making Your Home Healthier



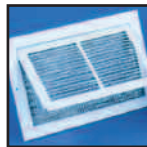
Nutech Brands Inc., manufacturer of the Lifebreath line of climate and air quality control products, is a world leader in the increasingly important field of Indoor Air Quality Management. Nutech's mission is to improve the quality of the indoor air we breathe. With more than 200,000 Heat/Energy Recovery Ventilation installations throughout North America, Lifebreath is the recognized leader in Indoor Air Quality (IAQ).

Accessories:



Techgrille™

Provides the finest quiet air diffusion available. Easily adjustable (rotating) openings allow for precise air flow balancing throughout any room. Sizes to fit in 4", 5", 6" and 8" ducts. Cool white in colour.



Specialty Grille

Hinged kitchen exhaust grille easily flips open for access to washable aluminum grease filter; fits 6" x 10" opening. White in colour.



Weatherhoods

A pair of these meshed (1/4") exterior HRV duct terminations are normally used to resist entry of small animals, rain and snow. Available in white 5", 6" and 7" diameter with special insulated flex terminations.

Specifications and Performance Quick Reference Guide

Model No.	95MAX	155MAX 155MAX RX	155ECM	200MAX 200MAX RX	MAXTOP	195DCS	300DCS
Airflow Wg (Pa)	CFM(L/S)	CFM(L/S)	CFM(L/S)	CFM(L/S)	CFM(L/S)	CFM(L/S)	CFM(L/S)
.1 (25 Pa)	76 (36)	150 (71)	164 (77)	207 (97)	196 (93)	203 (96)	265 (125)
.2 (50 Pa)	73 (34)	146 (69)	157 (74)	200 (94)	188 (89)	191 (90)	260 (123)
.3 (75 Pa)	70 (33)	134 (63)	147 (69)	184 (87)	178 (84)	182 (86)	250 (118)
.4 (100 Pa)	66 (31)	121 (57)	146 (69)	171 (80)	165 (78)	167 (79)	235 (111)
.5 (125 Pa)	60 (29)	106 (50)	140 (66)	152 (71)	149 (70)	155 (73)	220 (104)
Effectiveness @-25°C	86%	78%	79%	73%	83%	87%	87%
Defrost Type	Recirculate	Recirculate	Recirculate	Recirculate	Recirculate	Damper	Damper
Dimensions H x W x D (in.)	24.5 x 18.5 x 16	19 x 33.62 x 14.75	19 x 33.62 x 14.75	19 x 33.62 x 14.75	25.5 x 22.5 x 26.5	19 x 49 x 14.75	19 x 49 x 14.75
Electrical	All units are 5 speed 120VAC/60HTZ/1 Phase All units have a 5 year warranty on parts; lifetime on the heat exchange core.						

Options: All above units are capable of operating via remote low voltage controls. Check shop drawings and accessories for details. Nutech reserves the right to make changes without prior notification.



511 McCormick Blvd.
London, Ontario N5W 4C8
Ph: (519) 457-1904
Fx: (519) 457-1676
Email: nutech@lifebreath.com
Website: www.lifebreath.com

270 Regency Ridge
Suite 210,
Dayton, Ohio 45459
Ph: (937) 439-6676
Fx: (937) 439-6685

